

ALLIANCE 4.7

No compromise

Unrivalled sensitivity



“Our Alliance 4.7 is incredibly sensitive. Our system is very powerful, fully motorised and automatic. The cutting edge camera and optics deliver ultimate scientific grade images ideal for all our applications in chemiluminescence, fluorescence and multiplexing.”

> In the spotlight

The Alliance 4.7 is an advanced imaging system designed to cover a large number of applications thanks to its proprietary optics combined with a deeply cooled 4.2 megapixel, 16-bit pixel depth camera.

Ideal for western blot, 1D and 2D gel, fluorescence, absorbance, multiplexing and bioluminescence, the system is extremely sensitive, with extreme resolution and extremely low noise.

> Motorised f0.95 lens

The Alliance 4.7 includes an impressive list of features such as autofocus, auto-exposure, UV security timer, motorised f0.95 lens, motorised filter wheel, 12 wavelength illumination options and a multi-position tray system. The automated imaging approach introduced by the Alliance 4.7 is unique in the market as the lighting filter and the lens positioning are fully automatic.

> Designed to be used

Pick up many imaging systems and you start to wonder if the designers have ever taken a picture themselves. The Alliance 4.7 was designed from the start with the user in mind. This means: menus that make sense, buttons that are easy to understand and to operate, a wide range of automatic settings covering virtually every imaginable application and a protocol-driven working principle.

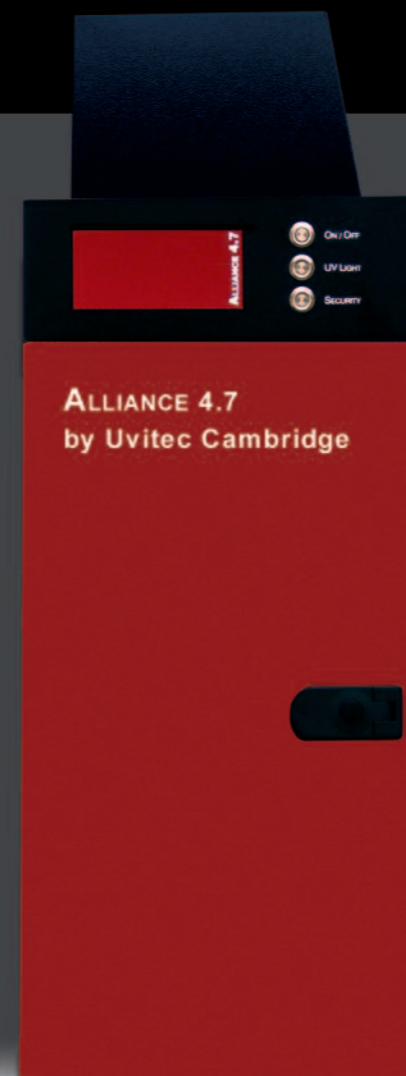
And, if you prefer a more hands-on approach, you will love the manual controls. The Alliance 4.7 has the ability to grow with the user and has a list of features long enough to satisfy the most demanding lab user.

> Get the excitation

Epi-Bright Multi-wavelength is an optional light excitation source which enlarges the wide range of fluorescence dye applications. Enter the exciting, new laboratory world of multiplexing, in-vivo, protein imaging, near IR detection and bio-fluorescence. Epi-Bright applications could include Syber-Green™, Flamingo™, Sypro-Ruby™, Sypro Orange™, ProQ™ dyes. Epi-Bright Multi-wavelength features 3 RGB wavelength illuminations on adjustable arms. Simply select the colour channel and get the excitation!

> Chemical attraction

- Chemiluminescence, fluorescence & visible
- Multiplexing and bioluminescence ready
- Quantification & documentation
- Gene expression, protein expression, RNA/DNA assay, colonies
- Open to most dyes available on the market from Invitrogen, GE Life Science, Thermo Pierce, Sigma, Millipore, Promega.

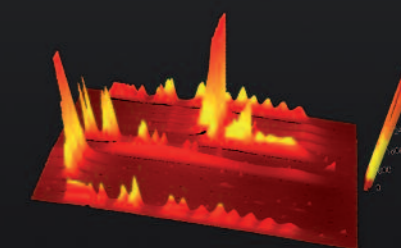


Sensitivity and resolution

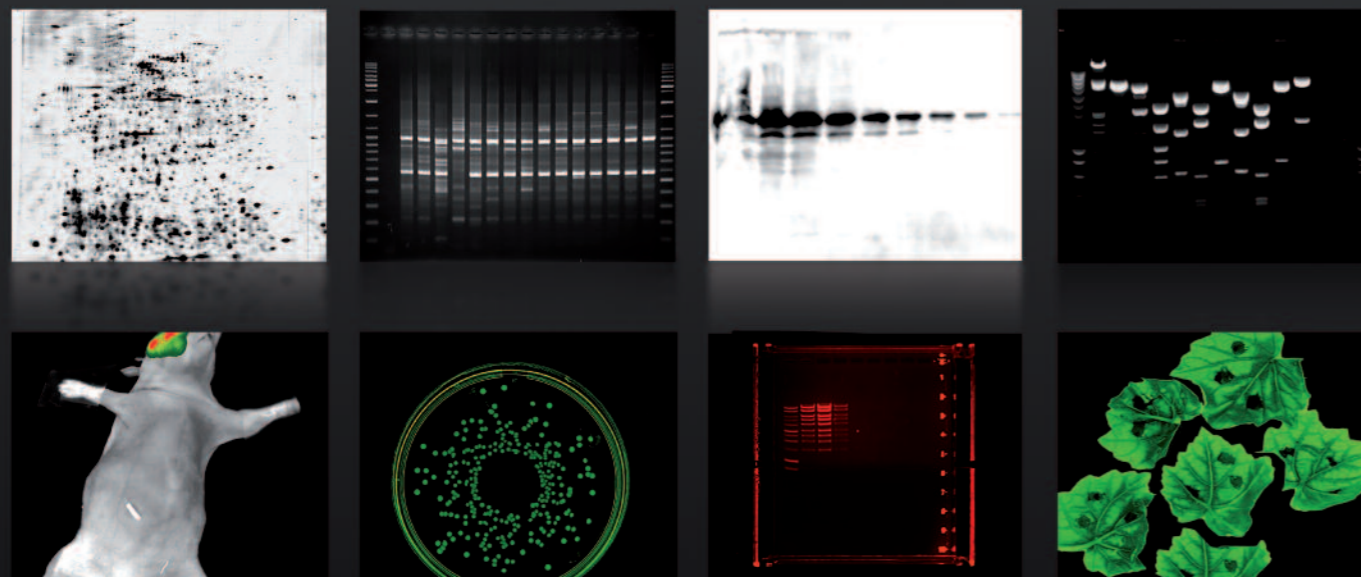
> State of the art

- 4.2 megapixels
- 16-bit pixel depth (65 536 grey levels)
- Dynamic range: 4.8 OD
- Extreme sensitivity
- Extreme resolution
- Extremely low noise
- Scientific grade CCD camera
- Electronically variable shutter speed
- 1.1 inch sensor
- Cooling -42°C absolute (-67°C compared to ambient) for the lowest noise
- Extremely bright motorised fixed lens (f:0,95)
- Motorised filter wheel
- Automatic lighting controls
- Autofocus
- Auto-exposure
- Focusing gauge for precise focusing
- Compact design
- Ideal for sensitivity demanding applications such as western blot

- Ideal for resolution demanding applications such as 1D quantification, 2D gel, multiplexing, bio-fluorescence and western blot
- Robust steel and stainless steel construction
- Advanced UViband or UVibandmap software available
- Roll-out transilluminator
- Direct access to key functions
- Multi-user capability
- Good Laboratory Practice (GLP) file
- Patented UVI-Pure technology available
- ‘One-touch’ fully automated image acquisition program
- Multi-position filter slide. Custom filters available.



UViband software



ALLIANCE LD4

The highest performance at a budget

All-in-one



“ We save a lot of time in imaging thanks to the incredible sensitivity of the Alliance LD4. Our system is ideal for all our applications such as gene and protein expression, RNA/DNA assay, in gels or western blot. ”

> Sensitive and versatile

The Alliance LD4 is a versatile imaging system ideal to handle both chemiluminescence and fluorescence imaging applications with ease.

The exceptionally sensitive and deeply cooled (to -42°C absolute) camera ensures that the faintest bands can be detected and accurately quantified.

The 4.2 megapixel resolution allows closely spaced bands to be easily resolved.

> Affordable western blot imaging

Prepare to throw away any preconceptions about what affordable western blot imaging means. You will be hooked from the moment you pick it up. The Alliance LD4 has an exceptional performance camera combined with fully featured, tough hardware and sophisticated software.

In combination with the scientific CCD camera the top quality f0.95 lens ensures high sensitivity and razor sharp imaging.

> Documentation and quantification

The Alliance LD4 is ideal for both documentation and quantification.

The fantastic ease of use of the complimentary Alliance 1D software is ideal in a multi-user environment. Users can save and retrieve software preferences to quicken and simplify the image acquisition process.

Advanced UVband or UVbandmap software could complete your system for sophisticated 1D analysis or database storage of analysed results.

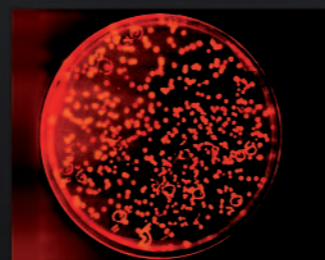
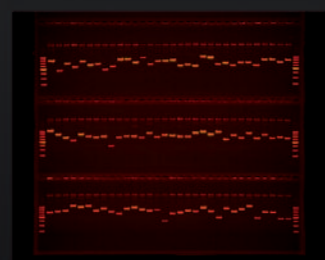
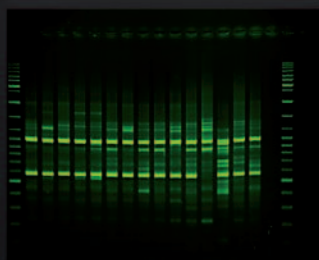
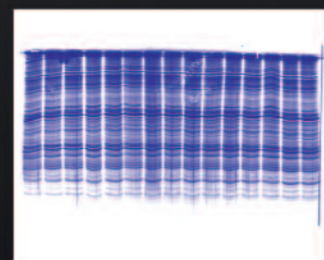
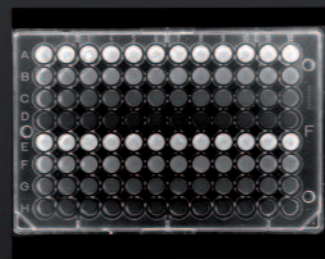
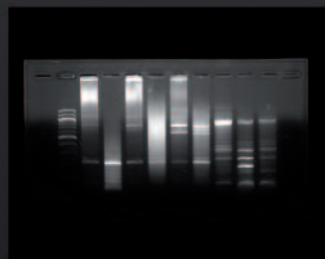
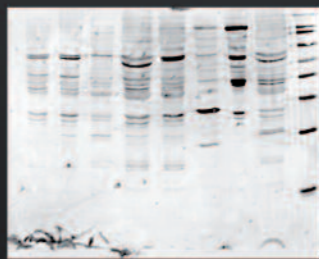
> Tailor your system

The Alliance LD4 is available in a variety of models to fit your budget and application. Options include, for instance, the scientific optics (manual or motorised with autofocus option), the epi-illumination modes (white light or UVA /UVC and white light) and the transilluminator technology and size (UVI-Pure or standard). The multi-position filter wheel can accommodate custom filters.

The Epi-Bright Multi-wavelength module could also be added to your system to enlarge the wide range of fluorescence dye applications.

> Chemical attraction

- Chemiluminescence, fluorescence & visible
- Multiplexing and bioluminescence ready
- Quantification & documentation
- Gene expression, protein expression, RNA/DNA assay, colonies
- Open to most dyes available on the market from Invitrogen, GE Life Science, Thermo Pierce, Sigma, Millipore, Promega.

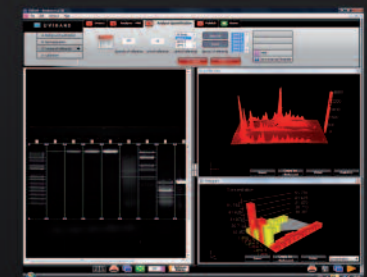


The imaging gateway

> The multi-application system

- 4.2 megapixels
- 16-bit pixel depth (65 536 grey levels)
- Dynamic range: 4.8 OD
- Extreme sensitivity
- Extreme resolution
- Extremely low noise
- Scientific grade CCD camera
- Electronically variable shutter speed
- 1.1 inch sensor
- Cooling -42°C absolute (-67°C compared to ambient) for the lowest noise
- Extremely bright manual or motorised fixed lens with aperture f:0,95
- Auto-exposure
- Focusing gauge for precise focusing
- Ideal for sensitivity demanding applications such as western blot
- Ideal for resolution demanding applications such as 1D quantification, 2D gel, multiplexing, bio-fluorescence and western blot

- 12 wavelength illumination options
- Bio-fluorescence & multiplexing ready
- Multi-position filter slide. Custom filters available
- Suitable for both routine documentation and critical quantitative applications
- Good Laboratory Practice (GLP) file
- Inclusive of free Alliance 1D software for both image acquisition and analysis
- Robust steel and stainless steel construction
- Copy the image to clipboard and paste either in Microsoft Word™ or Excel™

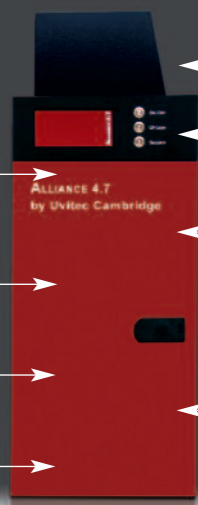


UVband software

CHEMILUMINESCENCE & FLUORESCENCE IMAGING

ALLIANCE 4.7 Close encounter

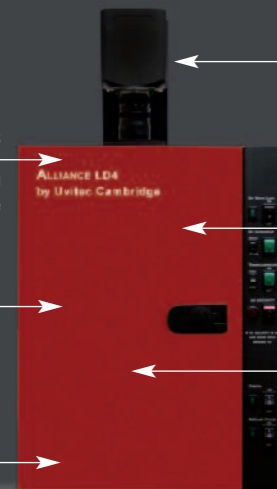
- Multi-position filter wheel to cover virtually all applications
- Say no to plastic. Steel and stainless steel darkroom
Epoxy-painted for chemical resistance
- Separate tray for western blot
- Choice of 12 illumination options
- LED white light epi is standard
- Optional filtered 2 wavelength UV
- Strict UV security
- Full imaging grade darkroom
- Complete black imaging body



- Extreme sensitivity 4.2 megapixels, 16-bit pixel depth, cooled to -67°C
- Fixed lens f0.95 – motorised for complete automatic imaging. Autofocus and focusing gauge for precise focusing
- 'One-touch' fully automated image acquisition programme: automatic lens positioning, automatic filter wheel positioning, automatic lighting, auto-exposure
- Bio-fluorescence and multiplexing ready – optional Epi-Bright multi-wavelength epi-illumination source
- Roll-out transilluminator
- UVI-PURE option
- UV security timer
- Single (312nm) or dual wavelength (312 & 365nm) for preparative work

ALLIANCE LD4 Close encounter

- Multi-position filter wheel to cover virtually all applications
- Say no to plastic. Steel and stainless steel darkroom
Epoxy-painted for chemical resistance
- Auto-exposure
- Choice of 12 illumination options
- Full imaging grade darkroom
- Complete black imaging body



- Extreme sensitivity 4.2 megapixels, 16-bit pixel depth, cooled to -67°C
- Fixed lens f0.95 – manual or motorised. Focusing gauge for precise focusing
- Bio-fluorescence and multiplexing ready
- Optional Epi-Bright multi-wavelength epi-illumination source
- LED white light epi is standard
- Optional filtered 2 wavelength UV
- Strict UV security



ALLIANCE 4.7 UNRIVALLED SENSITIVITY

ALLIANCE LD4 ALL-IN-ONE

| | CHEMILUMINESCENCE & FLUORESCENCE | CHEMILUMINESCENCE & FLUORESCENCE |
|---|--|--|
| | <p>The sensitivity & resolution orientation</p> <p>Ideal for resolution demanding applications such as 1D quantification, 2D gel, multiplexing, bio-fluorescence and chemiluminescent blots.</p> | <p>The highest performance at a budget</p> |
| <p>Configuration</p>  | <p>Steel and stainless steel darkroom</p> <p>Epoxy-painted for chemical resistance</p> <p>Black body imaging grade</p> <p>Motorised 6-position filter wheel</p> <p>8-Watt built-in roll-out transilluminator</p> <p>UV timer & security switch</p> <p>LED White light epi-illumination</p> | <p>Steel and stainless steel darkroom</p> <p>Epoxy-painted for chemical resistance</p> <p>Black body imaging grade</p> <p>6-position filter wheel</p> <p>LED White light epi-illumination</p> |
| <p>Camera & optics</p>  | <p>4.2 megapixels 16-bit pixel depth (65 384 grey levels)</p> <p>Dynamic range: 4.8 OD</p> <p>Extreme resolution</p> <p>Scientific grade camera with electronically variable shutter speed. Ultra-high sensitivity</p> <p>1,1 inch sensor</p> <p>Extremely bright fixed lens (f:0,95) – motorised - autofocus</p> <p>Cooling -42°C absolute (-67°C compared to ambient) for the lowest noise</p> | <p>4.2 megapixels 16-bit pixel depth (65 384 grey levels)</p> <p>Dynamic range: 4.8 OD</p> <p>Extreme resolution</p> <p>Scientific grade camera with electronically variable shutter speed. Ultra-high sensitivity</p> <p>1,1 inch sensor</p> <p>Extremely bright fixed lens (f:0,95) – manual or motorised</p> <p>Cooling -42°C absolute (-67°C compared to ambient) for the lowest noise</p> |
| <p>Software</p>  | <p>Alliance 1D software</p> <p>'One-touch' fully automated image acquisition programme</p> <p>Image enhancement, annotation and illustration</p> <p>3 image analysis modules:</p> <ul style="list-style-type: none"> - 1D Molecular weight (MW, volume, intensity...) - Colony counting - Distance calculation (RF, IEF...) | <p>Alliance 1D software</p> <p>'One-touch' fully automated image acquisition programme</p> <p>Image enhancement, annotation and illustration</p> <p>3 image analysis modules:</p> <ul style="list-style-type: none"> - 1D Molecular weight (MW, volume, intensity...) - Colony counting - Distance calculation (RF, IEF...) |
| <p>Options</p>  | <ul style="list-style-type: none"> • Transilluminator UVI-PURE or standard transilluminator. UV surface: 26x21 or 20x20 cm. Single or dual wavelength available • Light panel UV to white light conversion screen UV to blue light conversion screen Epi-Bright module • Software UVI-Band or UVI-BandMap (p.28 for details) | <ul style="list-style-type: none"> • Transilluminator UVI-PURE or standard transilluminator. UV surface: 26x21 or 20x20 cm. Single or dual wavelength available • Light panel UV to white light conversion screen UV to blue light conversion screen Epi-Bright module • Software UVI-Band or UVI-BandMap (p.28 for details) |

CHEMILUMINESCENCE & FLUORESCENCE IMAGING

ALLIANCE 2.7

Expand your territories



“The Alliance 2.7 is fully automatic, from the motorised f:0,95 lens to the filter wheel. Just one click is necessary for our protocol-driven image acquisition. The sensitivity and resolution are simply astonishing”

> Motorised f0.95 lens

The Alliance 2.7 includes an impressive list of features such as autofocus, auto-exposure, UV security timer, motorised f0.95 lens, motorised filter wheel, 12 wavelength illumination options and a multi-position tray system. The automated imaging approach introduced by the Alliance 2.7 is unique in the market as the lighting filter and the lens positioning are fully automatic.

> Get the excitation

Epi-Bright Multi-wavelength is an optional light excitation source which enlarges the wide range of fluorescence dye applications. Enter the exciting, new laboratory world of multiplexing, in-vivo, protein imaging, near IR detection and bio-fluorescence. Epi-Bright applications could include Syber-Green™, Flamingo, Sypro-Ruby™, Sypro Orange™, ProQ™ dyes.



Epi-Bright Multi-wavelength features 3 RGB wavelength illuminations on adjustable arms. Simply select the colour channel and get the excitation!

> Chemical attraction

- Chemiluminescence, fluorescence & visible
- Multiplexing and bioluminescence ready
- Quantification & documentation
- Gene expression, protein expression, RNA/DNA assay, colonies
- Open to most dyes available on the market from Invitrogen, GE Life Science, Thermo Pierce, Sigma, Millipore, Promega

ALLIANCE LD2

Affordable and flexible



“We are very proud of our Alliance LD2. We use it for chemiluminescence and multiplexing. Our razor sharp images are ideal for quantification and publication. We save a lot of time thanks to the very high sensitivity of the system.”

> Affordable western blot imaging

Prepare to throw away any preconceptions about what affordable western blot imaging means. You will be hooked from the moment you pick it up. The Alliance LD2 has an exceptional performance camera combined with fully featured, tough hardware and sophisticated software.

In combination with the scientific CCD camera the top quality f0.95 lens ensures high sensitivity and razor sharp imaging.

> Tailor your system

The Alliance LD2 is available in a variety of models to fit your budget and application. Options include, for instance, the scientific optics (manual or motorised with autofocus option), the epi-illumination modes (white light or UVA /UVC and white light) and the transilluminator technology and size (UVI-Pure or standard). The multi-position filter wheel can accommodate custom filters.



The Epi-Bright Multi-wavelength module could also be added to your system to enlarge the wide range of fluorescence dye applications. Enter the exciting new laboratory world of multiplexing, in-vivo, protein imaging, near IR detection and bio-fluorescence.

> Chemical attraction

- Chemiluminescence, fluorescence & visible
- Multiplexing and bioluminescence ready
- Quantification & documentation
- Gene expression, protein expression, RNA/DNA assay, colonies
- Open to most dyes available on the market from Invitrogen, GE Life Science, Thermo Pierce, Sigma, Millipore, Promega

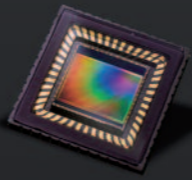
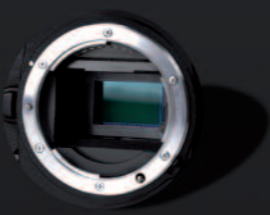
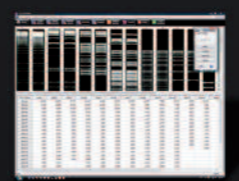



ALLIANCE 2.7

EXPAND YOUR TERRITORIES

ALLIANCE LD2

AFFORDABLE & FLEXIBLE

| | CHEMILUMINESCENCE & FLUORESCENCE | CHEMILUMINESCENCE & FLUORESCENCE |
|---|---|---|
| | Routine documentation and quantification Ideal for gel and western blot imaging. | Performance at a budget |
| Configuration  | Steel and stainless steel darkroom Epoxy-painted for chemical resistance Black body imaging grade Motorised 6-position filter wheel 8-Watt built-in roll-out transilluminator UV timer & security switch LED White light epi-illumination | Steel and stainless steel darkroom Epoxy-painted for chemical resistance Black body imaging grade 6-position filter wheel Optional transilluminator UV security switch LED White light epi-illumination |
| Camera & optics  | 2 megapixels 16-bit pixel depth (65 384 grey levels) Dynamic range: 4.8 OD Scientific grade camera with electronically variable shutter speed High sensitivity 1 inch sensor Extremely bright fixed lens (f:0,95) – motorised - autofocus Cooling -25°C absolute (-50°C compared to ambient) for the lowest noise | 2 megapixels 16-bit pixel depth (65 384 grey levels) Dynamic range: 4.8 OD Scientific grade camera with electronically variable shutter speed High sensitivity 1 inch sensor Extremely bright fixed lens (f:0,95) – manual or motorised Cooling -25°C absolute (-50°C compared to ambient) for the lowest noise |
| Software  | Alliance 1D software ‘One-touch’ fully automated image acquisition programme Image enhancement, annotation and illustration 3 image analysis modules: - 1D Molecular weight (MW, volume, intensity...) - Colony counting - Distance calculation (RF, IEF...) | Alliance 1D software ‘One-touch’ fully automated image acquisition programme Image enhancement, annotation and illustration. 3 image analysis modules: - 1D Molecular weight (MW, volume, intensity...) - Colony counting - Distance calculation (RF, IEF...) |
| Options  | <ul style="list-style-type: none"> • Transilluminator UVI-PURE or standard transilluminator. UV surface: 26x21 or 20x20 cm Single or dual wavelength available • Light panel UV to white light conversion screen UV to blue light conversion screen Epi-Bright module • Software UVI-Band or UVI-BandMap (p.28 for details) | <ul style="list-style-type: none"> • Transilluminator UVI-PURE or standard transilluminator. UV surface: 26x21 or 20x20 cm Single or dual wavelength available • Light panel UV to white light conversion screen UV to blue light conversion screen Epi-Bright module • Software UVI-Band or UVI-BandMap (p.28 for details) |