

UVIdoc HD2

The all-inclusive stand-alone

The stand-alone system with computer performance



“ We are pleased that this 12-bit imaging system offers network connectivity which in turn prevents ethidium bromide contamination of our PC. The interface is very user friendly and colourful. The UVIdoc offers a lot of imaging capabilities ”

> No more queues for documentation

Many laboratories have already discovered the benefits of UVIdoc's speed and simplicity. With no learning curve and only a few buttons to press a high quality printout or a saved image can be produced in seconds, making darkroom queuing a thing of the past.

The safety, speed and robustness of UVIdoc have even made it an essential tool in many teaching laboratories, the ultimate multi-user environment!

The UVIdoc is a superbly designed documentation system featuring a unique combination of simplicity and versatility. It operates as a stand-alone unit for producing high quality megapixel images. These can be easily saved on a USB drive or transferred to a computer via the network LAN.

> USB drive and network capabilities

A unique feature of the UVIdoc is its IP internet capability enabling connection of the system to your lab network.

Do the job in the lab and download your image from the comfort of your office thanks to the easy-share network connection and the huge UVIdoc internal memory. This could protect your office from ethidium bromide contamination.

Alternatively, the image can be saved on your USB key for future transfer to your computer.

> Technology with simplicity

The unique massive 12-bit and 1.4 megapixel performance delivers a high signal-to-noise ratio producing perfect imaging for both quantification and publication.

UVIdoc HD2 incorporates the most efficient and versatile darkroom cabinet available.

The transilluminator is fully enclosed but can be pulled out easily on a movable tray to allow visual examination of the gel and band extraction.

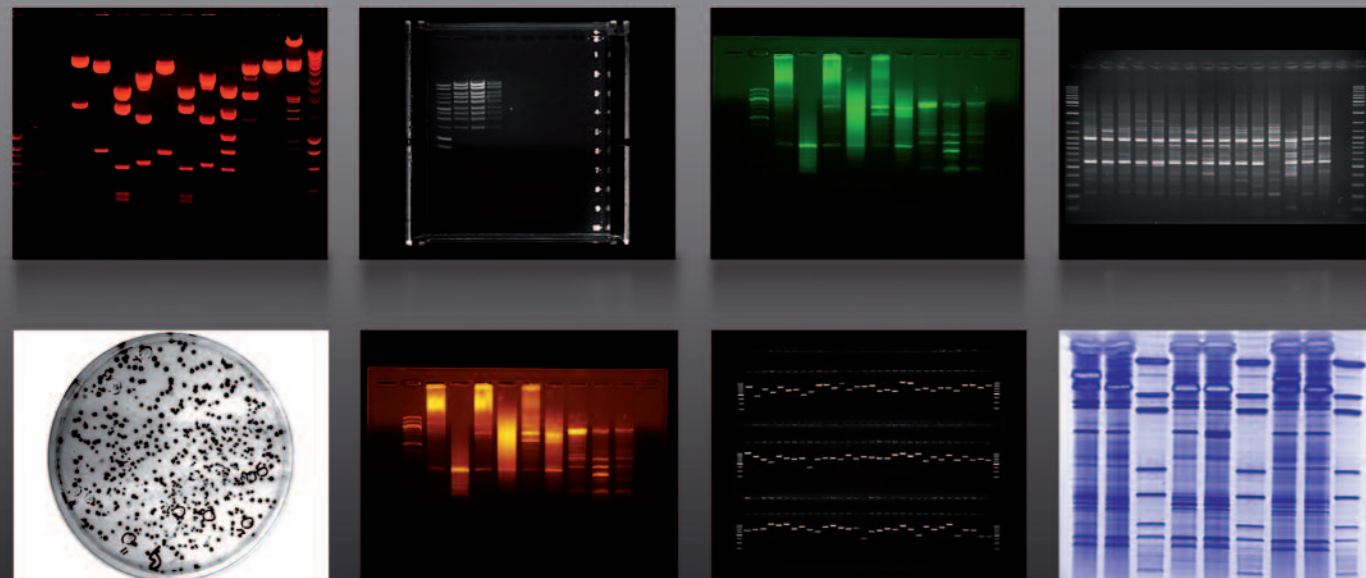
The saturation monitoring of the live image ensures that fully quantifiable images can be captured first time.

The built-in super giant digital monitor allows a convenient and comfortable preview of the image with a very simple and elegant user interface

> Complimentary UVIdoc 1D software

The complimentary UVIdoc 1D software provides a comprehensive set of image acquisition, enhancement and analysis tools. From molecular weight to colony counting, UVIdoc 1D is perfect for both analysis and gel annotation plus editing.

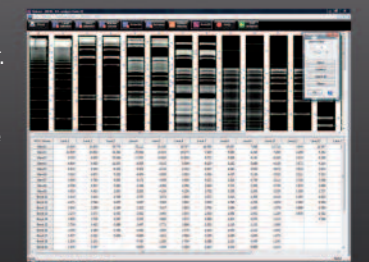
The analysis module includes molecular weight and volume calculation, IEF and colony counting.



SUNSHINE in your lab

> Cutting edge performance

- Simplicity and versatility
- Stand-alone: no additional computer needed
- Ideal for multi-user environments
- All the flexibility of an instant photography system
- 1.4 megapixels
- 12-bit pixel depth for increased dynamic range
- Extreme sensitivity for the faintest fluorescence sample
- Suitable for both routine documentation & critical quantitative applications
- Saturation monitoring of live images to ensure they are fully quantifiable
- Roll-out transilluminator
- UV safety switch
- Very large field of view
- Patented UVI-Pure technology available
- Robust steel and stainless steel construction
- Scientific Sony chip CCD camera
- 4 USB ports for connecting a USB Flash drive, a USB printer and a mouse simultaneously, if desired.
- Auto-exposure
- Fully networkable allowing easy image transfer to a PC
- On-board computer
- 8" high grade TFT LCD panel
- Superb quality camera filter optimised for ethidium bromide
- White light epi-illumination
- Multi-position filter holder. Custom filters available
- Free UVIdoc 1D software included for both image acquisition and analysis



UVISAVE HD2

With one's eyes shut

Gel watch



“ We found the UVIsave very user friendly: just click and print! The image quality is perfect for documentation. We particularly like the pixel saturation warning which ensures optimum quality of our final image ”

> Instant and instinctive

Get your instant printing in seconds. The UVIsave HD2 interface is simplicity itself. Exposure time is varied by pressing a '+' button to increase and a '-' button to decrease. Simply place the camera hood over the gel, optimise the image whilst viewing it on the built-in super large LCD screen, freeze the image then print it on the video printer or save it on a USB key. The scientific grade optics and Sony chip CDD camera provide supreme imaging performance.

> For your gel only

UVIsave HD2 is currently used in many research departments as a central facility for a large number of users. The speed and robustness of the UVIsave HD2 have made it an essential tool in many teaching laboratories, the ultimate multi-user environment! UVIsave HD2 has all the flexibility of an instant photography system combined with the

speed, versatility and precision of a video documentation system. Unlike digital camera systems UVIsave HD2 allows the optimisation of your gel before you produce a print.

> Starware

UVIsave's HD2 special combination of simplicity and functionality has made it indispensable to a wide range of users. The saturation monitoring function means that UVIsave HD2 can be used by researchers who wish to quantify their gel images and to ensure no loss of detail from the image caused by saturation. The system can therefore be used on a variety of levels: from routine documentation to image publishing.

The exposure time could range from 40ms to 10 seconds. All functions are accessed by a single push of a button.

> Always ready

Because UVIsave HD2 is so simple to operate minimal training is required. UVIsave HD2 works with virtually any UV or white light transilluminator. The user interface includes a special keypad specifically designed for just-wipe-it-off cleaning. The high-grade TFT LCD monitor is protected by glass for enhanced robustness.

> Complimentary UVIsave HD2 1D software

The complimentary UVIsave HD2 1D software provides a comprehensive set of image acquisition, enhancement and analysis tools. From molecular weight to colony counting, UVIsave HD2 1D is perfect for both analysis and gel annotation plus editing.

The analysis module includes molecular weight and volume

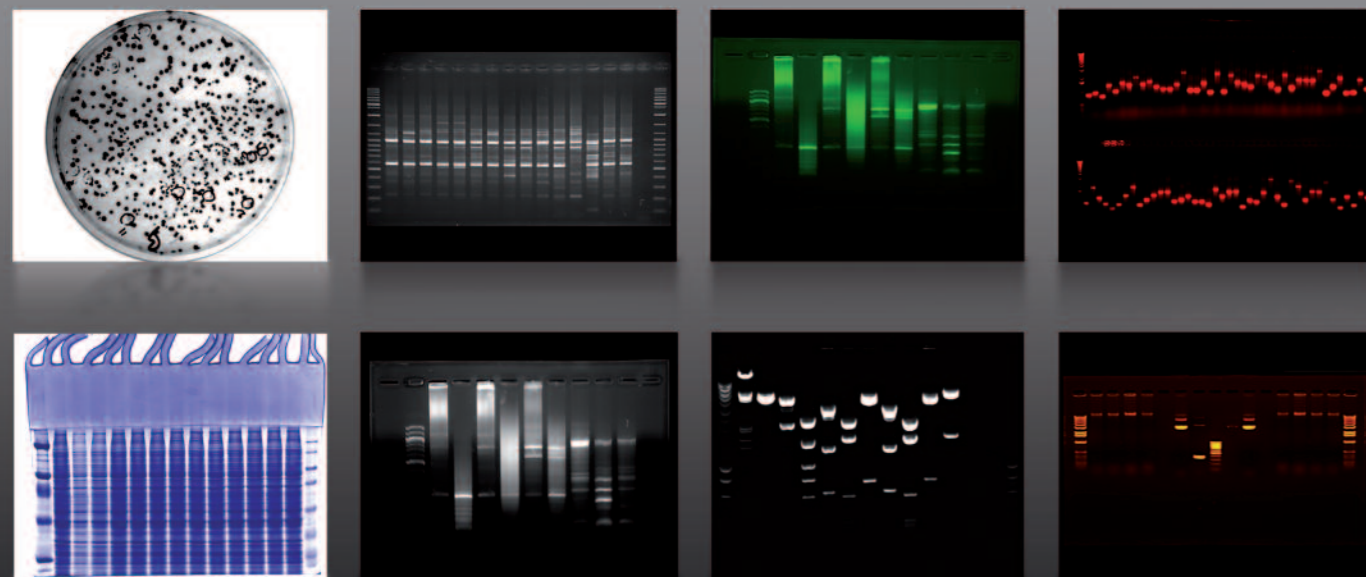
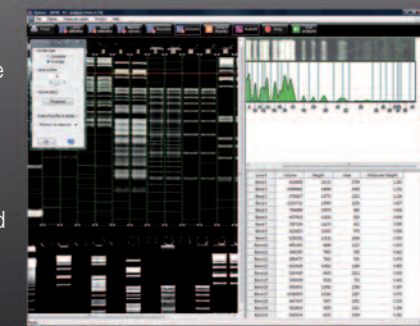


STARWARE

> Basic system with instant results

- As simple as affordable
- Ideal for publication and routine imaging
- All the flexibility of an instant photography system
- Speed, versatility and precision
- Low cost documentation system with CCD scientific grade camera
- Sony camera
- The world's simplest gel documentation system
- Stand-alone: no additional computer needed
- Ideal for multi-user environments
- Now with 8" TFT grade LCD screen
- Flexible – use with virtually any transilluminator
- Patented UVI-Pure technology available
- Print on a USB digital printer or save on a USB key
- Get your instant printing in seconds
- Unlike digital camera systems, set your exposure time and monitor the saturation

- UVIsave incorporates a user interface which is simplicity itself: all functions are accessed by a single push of a button
- 6 times optical zoom
- Very large field of view
- Ultra compact, rapid and easy to use
- Superb quality camera filter optimised for ethidium bromide
- Saturation monitoring
- Free UVI doc 1D software included for both image acquisition and analysis



GEL-DOC

UVIDOC HD2 Close encounter

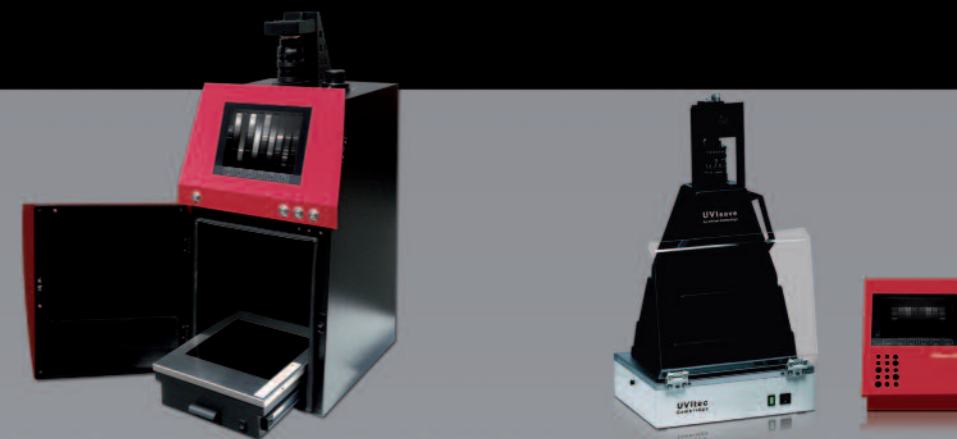
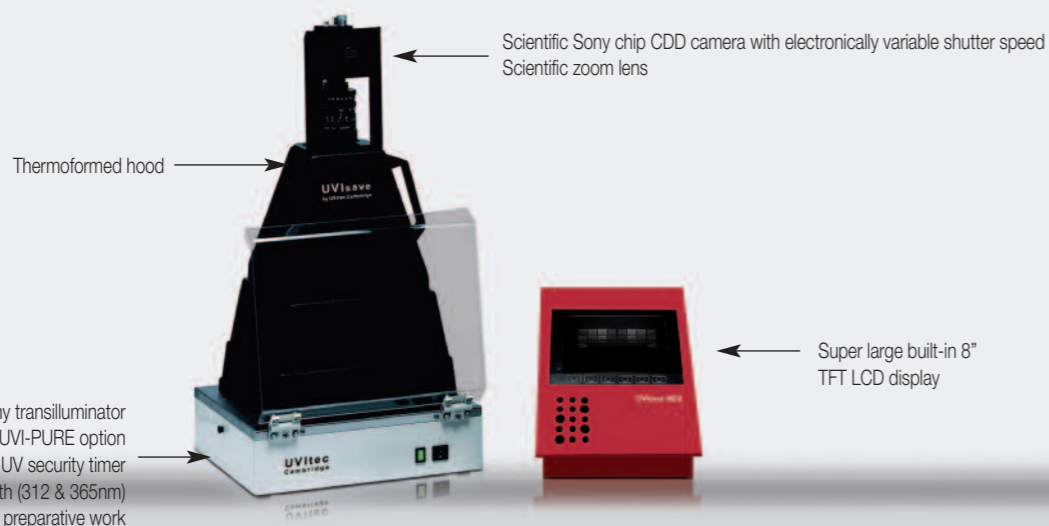
Say no to plastic
Steel and stainless steel darkroom
Epoxy-painted for chemical resistance

Full imaging grade darkroom
Black imaging body

Roll-out transilluminator
UVI-PURE option
UV security timer
Single (312nm) or dual
wavelength (312 & 365nm) for
preparative work



UVISAVE HD2 Close encounter



UVIDOC HD2 THE ALL-INCLUSIVE STAND-ALONE

UVISAVE HD2 INSTANT & INSTINCTIVE

FLUORESCENCE

The stand-alone with computer performance

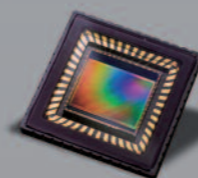
- Extreme sensitivity for the faintest fluorescence sample
- Simplicity and versatility
- Suitable for both routine documentation & critical quantitative applications
- USB drive and network capabilities
- Megapixel imaging

FLUORESCENCE

As simple as affordable

- Ideal for publication and routine imaging
- All the flexibility of an instant photography system
- Speed, versatility and precision
- Get your instant printing in seconds

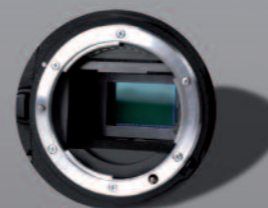
Configuration



Super large built-in 8" TFT LCD display.
HD2 darkroom
Steel and stainless steel darkroom
Epoxy-painted for chemical resistance
Black body imaging grade
3-position filter wheel
8-Watt built-in roll-out transilluminator
UV timer & security switch
White light epi-illumination

Super large built-in 8" TFT LCD display.
Thermoformed hood - works with virtually any transilluminator

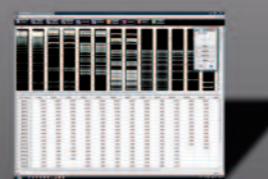
Camera & optics



Scientific Sony chip CCD camera with electronically variable shutter speed
1.4 megapixels / 12-bit imaging (4.096 grey levels)
Extreme sensitivity
6 times optical zoom

Scientific Sony chip CCD camera with electronically variable shutter speed
1.4 megapixel
12-bit performance
High sensitivity
6 times optical zoom

Software



UVIdoc 1D software

Image enhancement, annotation and illustration.

- 3 image analysis modules:
- 1D molecular weight (MW, volume, intensity...)
 - Colony counting
 - Distance calculation (RF, IEF...)

UVIdoc 1D software

Image enhancement, annotation and illustration.

- 3 image analysis modules:
- 1D molecular weight (MW, volume, intensity...)
 - Colony counting
 - Distance calculation (RF, IEF...)

Options



• Transilluminator

UVI-PURE or standard transilluminator
UV surface: 26x21 or 20x20 cm
Single or dual wavelength available

• Light panel

UV to white light conversion screen
UV to blue light conversion screen

• Software

Advanced UVI-Band or UVI-BandMap software.
See page 28 for details

• Transilluminator

Flexible – use with virtually any transilluminator
Optional UVI-PURE or standard transilluminator
UV surface: 26x21 or 20x20 cm
Single or dual wavelength available

• Software

Advanced UVI-Band or UVI-BandMap software.
See page 28 for details

